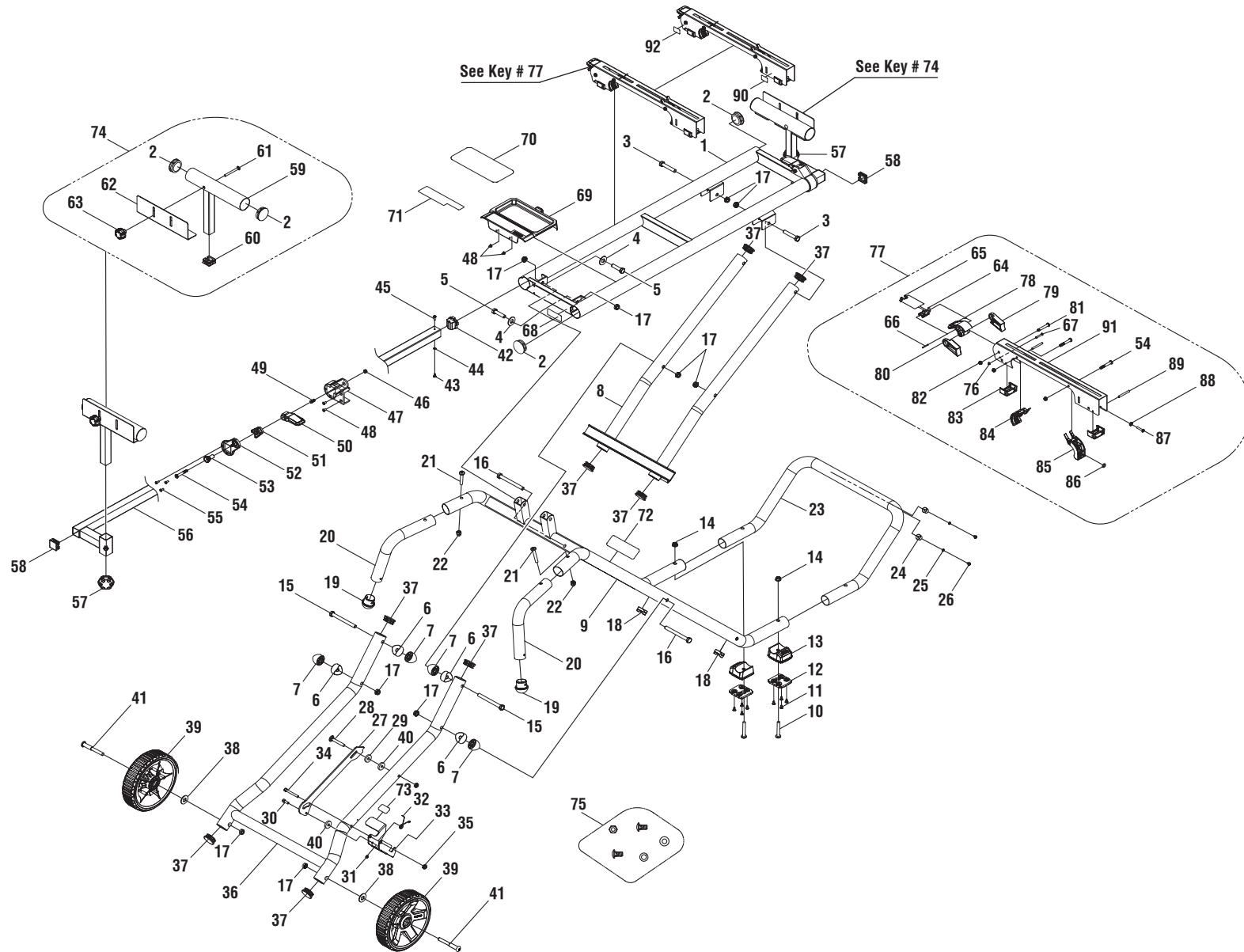


RIDGID
AC9945 MITER SAW UTILITY VEHICLE
REPAIR SHEET

RIDGID
AC9945 CHARIOT UTILITAIRE POUR
SCIE À ONGLETS
FEUILLE DE RÉPARATION

RIDGID
AC9945 CARRO DE SERVICIO PARA
SIERRAS INGLETEADORAS
LISTAS DE PIEZAS DE REPUESTO



RIDGID® AC9945

KEY	P/N	DESCRIPTION	QTY	KEY	P/N	DESCRIPTION	QTY	KEY	P/N	DESCRIPTION	QTY
1	000999131001	Frame Assembly (Top Rails)	1	32	000999131023	Spring (D1.5 mm x 2.7).....	1	64	000999131058	Locking Lever Release Trigger	2
2	0000220204	End Cap (D45.5 mm)	6	33	000999131024	Release Lever	1	65	414011014	Spring Pin (M4 x 30 mm)	2
3	000999131003	Screw (M10 x 55 x 15 mm, Hex Soc.)	2	34	000999131025	Screw (M8 x 60 x 20 mm).....	1	66	000999131059	Spring (D0.8 mm).....	2
4	000999131004	Washer (D10.5 x D28 x 2t).....	4	35	411071006	Nut (M8).....	2	67	000999131060	Screw (M4 x 42 x 6 mm).....	2
5	000999131005	Screw (M10 x 45 x 13 mm, Hex Soc.)	2	36	000999131026	Center Brace (Lower).....	1	68	000999131902	Data Label	1
6	000999131006	Spacer (D34 mm, Short).....	4	37	000999131027	End Cap (D38.1 mm)	8	69	000999131002	Accessory Tray	1
7	000999131007	Spacer (D34 mm, Long).....	4	38	000999131028	Washer (D10 x D26 x 2t).....	2	70	000999131900	Warning Label (French/Spanish)	
8	000999131008	Center Brace (Upper).....	1	39	000999131029	Wheels (8 in.)	2	71	000999131901	Warning Label (English)	1
9	000999131009	Outer Brace	1	40	000999131062	Washer (D8.2 x D32 x 1.5t).....	2	72	000999131904	MSUV Logo Label.....	1
10	000999131010	Screw (M8 x 55 mm, Pan Head).....	2	41	000999131031	Bolt (M10 x 100 mm, Hex Hd.)	2	73	000999131906	Release Lever Label	1
11	410601003	Screw w/Washer (M4 x 10 mm / D4.2 x D12 x1t).....	8	42	0000220206	Pad	2	74	000999131700	Work Support Assembly (Incl. 2 and 59-63).....	1
12	000999131011	Stand Feet (Rubber)	2	43	000999131032	Screw (M4 x 12 mm, Pan Hd.).....	2	75	000900181056	Accessory Parts.....	1
13	000999131012	Stand Feet	2	44	412021005	Lock Washer (D5)	2	76	000999131061	Hex Nut (M4).....	2
14	411061003	Nut (M8).....	2	45	000999131034	Screw (M4 x 12 mm, Pan Hd.).....	2	77	000999131701	Saw Mounting Bracket Assembly (Incl. 64-67 and 78-91)	1
15	410011029	Hex Screw (M10 x 115 mm)	2	46	411072001	Nut (M6).....	2	78	000999131053	Lock Lever Handle.....	2
16	410011028	Hex Screw (M10 x 55 mm)	2	47	000999131035	Lock Lever Housing.....	2	79	000999131054	Left Cam	2
17	0512010812	Lock Nut (M10).....	10	48	410102008	Screw (M5 x 12 mm, Flat Hd.).....	4	80	000999131055	Right Cam.....	2
18	000999131013	Bumper (Outer Brace).....	2	49	000999131036	Spring	2	81	0000220804	Screw.....	2
19	000999131014	End Cap (D35 mm)	2	50	000999131037	Lock Lever	2	82	411072001	Lock Nut (M6)	6
20	000999131015	Handle	2	51	000999131038	Block.....	2	83	0000220211	Mounting Bracket End Cap	4
21	000999131016	Screw (M8 x 45 mm, Pan Hd.).....	2	52	000999131039	Lock Lever Cap	2	84	0000220214	Front Clamping Bracket.....	2
22	000999131017	Hex Nut (M8).....	2	53	000999131040	Adjustable Cam	2	85	0000220213	Clamping Bracket.....	2
23	000999131018	Frame Support.....	1	54	0000220803	Screw.....	6	86	0000220309	Clamp Protector	2
24	0131011302	Bumper (Frame Support).....	2	55	000999131041	Screw (M4 x 10 mm).....	6	87	410132035	Screw (M6 x 30 mm).....	2
25	412011025	Washer (D6.5 x D10 x 0.8t).....	2	56	000999131042	Support Arm (30 x 30 x 1067 mm)	2	88	411012004	Hex Nut (M6).....	2
26	410451017	Screw (M6 x 18 mm).....	2	57	000999131043	Adjustment Knob.....	2	89	414011034	Pin (D5 x 45 mm)	4
27	000999131019	Latch Plate.....	1	58	0000220205	End Cap (30 mm).....	2	90	000999131905	Ridgid Logo Label	4
28	000999131020	Bolt (M8 x 55 mm)	1	59	000999131044	Work Support.....	2	91	000999131057	Saw Mounting Bracket	2
29	000999131021	Washer (D8.2 x D18 x 3t).....	1	60	000999131045	End Cap (25 mm).....	2	92	000999131903	Warning Label.....	4
30	410151010	Screw (M6 x 15 mm).....	1	61	410032015	Bolt (M6 x 60 mm)	2		987000973	Operator's Manual	
31	411071001	Nut (M6).....	1	62	000999131047	Work Plate	2		8-2-10		
				63	000999131048	Knob	2		(REV:03)		

PIÈCE RÉF.	DESCRIPTION	QTÉ	PIÈCE RÉF.	DESCRIPTION	QTÉ	PIÈCE RÉF.	DESCRIPTION	QTÉ			
1	000999131001	Ensemble de tube de support (rails supérieurs).....	1	32	000999131023	Ressort (D1.5 mm x 2.7).....	1	64	000999131058	Gâchette de relâchement de levier de verrouillage.....	2
2	0000220204	Capuchon d'extrémité (D45.5 mm).....	6	33	000999131024	Levier de dégagement.....	1	65	414011014	Goupille à ressort (M4 x 30 mm).....	2
3	000999131003	Vis (M10 x 55 x 15 mm, tête creuse hex.).....	2	34	000999131025	Vis (M8 x 60 x 20 mm).....	1	66	000999131059	Ressort (D0.8 mm).....	2
4	000999131004	Rondelle (D10.5 x D28 x 2t).....	4	35	411071006	Écrou (M8).....	2	67	000999131060	Vis (M4 x 42 x 6 mm).....	2
5	000999131005	Vis (M10 x 45 x 13 mm, tête creuse hex.).....	2	36	000999131026	Renfort central (inférieur).....	1	68	000999131902	Étiquette de données.....	1
6	000999131006	Entretoise (D34 mm, court).....	4	37	000999131027	Capuchon d'extrémité (D38.1 mm).....	8	69	000999131002	Table accessoire.....	1
7	000999131007	Entretoise (D34 mm, largo).....	4	38	000999131028	Rondelle (D10 x D26 x 2t).....	2	70	000999131900	Étiquette d'avertissement (Français/Espagnol).....	1
8	000999131008	Renfort central (supérieur).....	1	39	000999131029	Roue (8 po).....	2	71	000999131901	Étiquette d'avertissement (Anglais).....	1
9	000999131009	Renfort extérieure.....	1	40	000999131062	Rondelle (D8.2 x D32 x 1.5t).....	2	72	000999131904	Étiquette de logo MSUV.....	1
10	000999131010	Vis (M8 x 55 mm, tête cyl. large).....	2	41	000999131031	Boulon (M10 x 100 mm, tête hex.).....	2	73	000999131906	Étiquette de levier de dégagement.....	1
11	410601003	Vis avec rondelle (M4 x 10 mm, D4.2 x D12 x 1t).....	8	42	0000220206	Coussinet.....	2	74	000999131700	Ensemble de support de travail (incl. 2 et 59-63).....	1
12	000999131011	Pieds de stand (caoutchouc).....	2	43	000999131032	Vis (M4 x 12 mm, tête cyl. large).....	2	75	000900181056	Sachet de pièces détachées.....	1
13	000999131012	Pieds de stand.....	2	44	412021005	Rondelle frein (D5).....	2	76	000999131061	Écrou hexagonal (M4).....	2
14	411061003	Écrou (M8).....	2	45	000999131034	Vis (M4 x 12 mm, tête cyl. large).....	2	77	000999131701	Ensemble de supports de montage de scie (incl. 64-67 et 78-91).....	1
15	410011029	Écrou hexagonal (M10 x 115 mm).....	2	46	411072001	Écrou (M6).....	2	78	000999131053	Levier de verrouillage poignée.....	2
16	410011028	Écrou hexagonal (M10 x 55 mm).....	2	47	000999131035	Levier de verrouillage de logement.....	2	79	000999131054	Came à droit.....	2
17	0512010812	Écrou de blocage (M10).....	10	48	410102008	Vis (M5 x 12 mm, à tête plate).....	4	80	000999131055	Came à gauche.....	2
18	000999131013	Butoir (renfort extérieure).....	2	49	000999131036	Ressort.....	2	81	0000220804	Vis.....	2
19	000999131014	Capuchon d'extrémité (D35 mm).....	2	50	000999131037	Levier de verrouillage.....	2	82	411072001	Écrou de blocage (M6).....	6
20	000999131015	Poignée.....	2	51	000999131038	Bloc.....	2	83	0000220211	Supports de montage capuchon extrémité.....	4
21	000999131016	Vis (M8 x 45mm, tête cyl. large).....	2	52	000999131039	Levier de verrouillage capuchon.....	2	84	0000220214	Support de serrage avant.....	2
22	000999131017	Écrou hexagonal (M8).....	2	53	000999131040	Came de réglage.....	2	85	0000220213	Support de serrage.....	2
23	000999131018	Support de cadre.....	1	54	0000220803	Vis.....	6	86	0000220309	Protecteur du support de serrage.....	2
24	0131011302	Butoir (support de cadre).....	2	55	000999131041	Vis (M4 x 10 mm).....	6	87	410132035	Vis (M6 x 30 mm).....	2
25	412011025	Rondelle (D6.5 x D10 x 0.8t).....	2	56	000999131042	Rail d'extension (30 x 30 x 1067 mm).....	2	88	411012004	Écrou hexagonal (M6).....	2
26	410451017	Vis (M6 x 18 mm).....	2	57	000999131043	Bouton de réglage.....	2	89	414011034	Goupille (D5 x 45 mm).....	4
27	000999131019	Plaque de verrouillage.....	1	58	0000220205	Capuchon d'extrémité (30 mm).....	2	90	000999131905	Étiquette de logo Ridgid.....	4
28	000999131020	Boulon (M8 x 55 mm).....	1	59	000999131044	Butée.....	2	91	000999131057	Support de montage de la scie.....	2
29	000999131021	Rondelle (D8.2 x D18 x 3t).....	1	60	000999131045	Capuchon d'extrémité (25 mm).....	2	92	000999131903	Étiquette d'avertissement.....	4
30	410151010	Vis (M6 x 15 mm).....	1	61	410032015	Boulon (M6 x 60 mm).....	2		987000973	Manuel d'utilisation	
31	411071001	Écrou (M6).....	1	62	000999131047	Plaque de travail.....	2				
				63	000999131048	Bouton.....	2				

REF.	N/P	DESCRIPCIÓN	CANT.	REF.	N/P	DESCRIPCIÓN	CANT.	REF.	N/P	DESCRIPCIÓN	CANT.
1	000999131001	Conjunto de la armazón (rieles superiores)	1	32	000999131023	Resorte (D1.5 mm x 2.7).....	1	64	000999131058	Gatillo de afloje de la palanca de fijación.....	2
2	0000220204	Tapa extremo (D45.5 mm)	6	33	000999131024	Palanca de afloje	1	65	414011014	Pasador de resorte (M4 x 30 mm)	2
3	000999131003	Tornillo (M10 x 55 x 15 mm, cab. hueca hex.)..	2	34	000999131025	Tornillo (M8 x 60 x 20 mm)	1	66	000999131059	Resorte (D0.8 mm).....	2
4	000999131004	Arandela (D10.5 x D28 x 2t).....	4	35	411071006	Tuerca de nilón (M8)	2	67	000999131060	Tornillo (M4 x 42 x 6 mm)	2
5	000999131005	Tornillo (M10 x 45 x 13 mm, cab. hueca hex.)..	2	36	000999131026	Riostra central (inferior).....	1	68	000999131902	Etiqueta de datos	1
6	000999131006	Separador (D34 mm, corta)	4	37	000999131027	Tapa extremo (D38.1 mm)	8	69	000999131002	Mesa para accesorios	1
7	000999131007	Separador (D34 mm, larga).....	4	38	000999131028	Arandela (D10 x D26 x 2t).....	2	70	000999131900	Etiqueta de advertencia (Francés/Español).....	1
8	000999131008	Riostra central (superior)	1	39	000999131029	Rueda (8 in.).....	2	71	000999131901	Etiqueta de advertencia (Inglés)	1
9	000999131009	Riostra exterior	1	40	000999131062	Arandela (D8.2 x D32 x 1.5t).....	2	72	000999131904	Etiqueta del logotipo MSUV	1
10	000999131010	Tornillo (M8 x 55 mm, cab. trunc.).....	2	41	000999131031	Perno (M10 x 100 mm, cab. hex.)	2	73	000999131906	Etiqueta de palanca de afloje	1
11	410601003	Tornillo con arandela (M4 x 10 mm, D4.2 x D12 x1t).....	8	42	0000220206	Almohadilla	2	74	000999131700	Conjunto del soporte de trabajo (incl. 2 y 59-63).....	1
12	000999131011	Pies de pedestal (goma).....	2	43	000999131032	Tornillo (M4 x 12 mm, cab. trunc.).....	2	75	000900181056	Bolsa de piezas sueltas	1
13	000999131012	Pies de pedestal	2	44	412021005	Arandela de fijación (D5).....	2	76	000999131061	Tuerca hexagonal (M4).....	2
14	411061003	Tuerca (M8)	2	45	000999131034	Tornillo (M4 x 12 mm, cab. trunc.)	2	77	000999131701	Apoyos de montaje para la sierra (incl. 64-67 y 78-91).....	1
15	410011029	Tornillo hexagonal (M10 x 115 mm).....	2	46	411072011	Tuerca (M6)	2	78	000999131053	Palanca de fijación mango	2
16	410011028	Tornillo hexagonal (M10 x 55 mm).....	2	47	000999131035	Alojamiento de palanca de fijación.....	2	79	000999131054	Leva izquierda.....	2
17	0512010812	Tuerca de seguridad (M10)	10	48	410102008	Tornillo (M5 x 12 mm, cab. plana).....	4	80	000999131055	Leva derecha	2
18	000999131013	Tope (riostra exterior).....	2	49	000999131036	Resorte	2	81	0000220804	Tornillo	2
19	000999131014	Tapa extremo (D35 mm)	2	50	000999131037	Palanca de fijación	2	82	411072001	Tuerca de seguridad (M6)	6
20	000999131015	Mango.....	2	51	000999131038	Bloques.....	2	83	0000220211	Apoyo de montaje tapa extremo	4
21	000999131016	Tornillo (M8 x 45mm, cab. trunc.).....	2	52	000999131039	Tapa de alanca de fijación	2	84	0000220214	Soporte de sujecion delantero	2
22	000999131017	Tuerca hexagonal (M8).....	2	53	000999131040	Leva de ajuste	2	85	0000220213	Soporte de sujecion.....	2
23	000999131018	Apoyo del bastidor	1	54	0000220803	Tornillo	6	86	0000220309	Protector del soporte de sujecion	2
24	0131011302	Tope (apoyo del bastidor).....	2	55	000999131041	Tornillo (M4 x 10 mm)	6	87	410132035	Tornillo (M6 x 30 mm)	2
25	412011025	Arandela (D6.5 x D10 x 0.8t).....	2	56	000999131042	Brazo de extensión (30 x 30 x 1067 mm).....	2	88	411012004	Tuerca hexagonal (M6).....	2
26	410451017	Tornillo (M6 x 18 mm)	2	57	000999131043	Perilla de ajuste	2	89	414011034	Pasador (D5 x 45 mm)	4
27	000999131019	Placa de fijación	1	58	0000220205	Tapa extremo (30 mm).....	2	90	000999131905	Etiqueta del logotipo Ridgid	4
28	000999131020	Perno (M8 x 55 mm)	1	59	000999131044	Soporte de trabajo.....	2	91	000999131057	Apoyo de montaje de la sierra.....	2
29	000999131021	Arandela (D8.2 x D18 x 3t).....	1	60	000999131045	Tapa extremo (25 mm).....	2	92	000999131903	Etiqueta de advertencia.....	4
30	410151010	Tornillo (M6 x 15 mm)	1	61	410032015	Perno (M6 x 60 mm)	2	987000973	Manual del operador		
31	411071001	Tuerca (M6)	1	62	000999131047	Placa de trabajo.....	2				
				63	000999131048	Perilla.....	2				