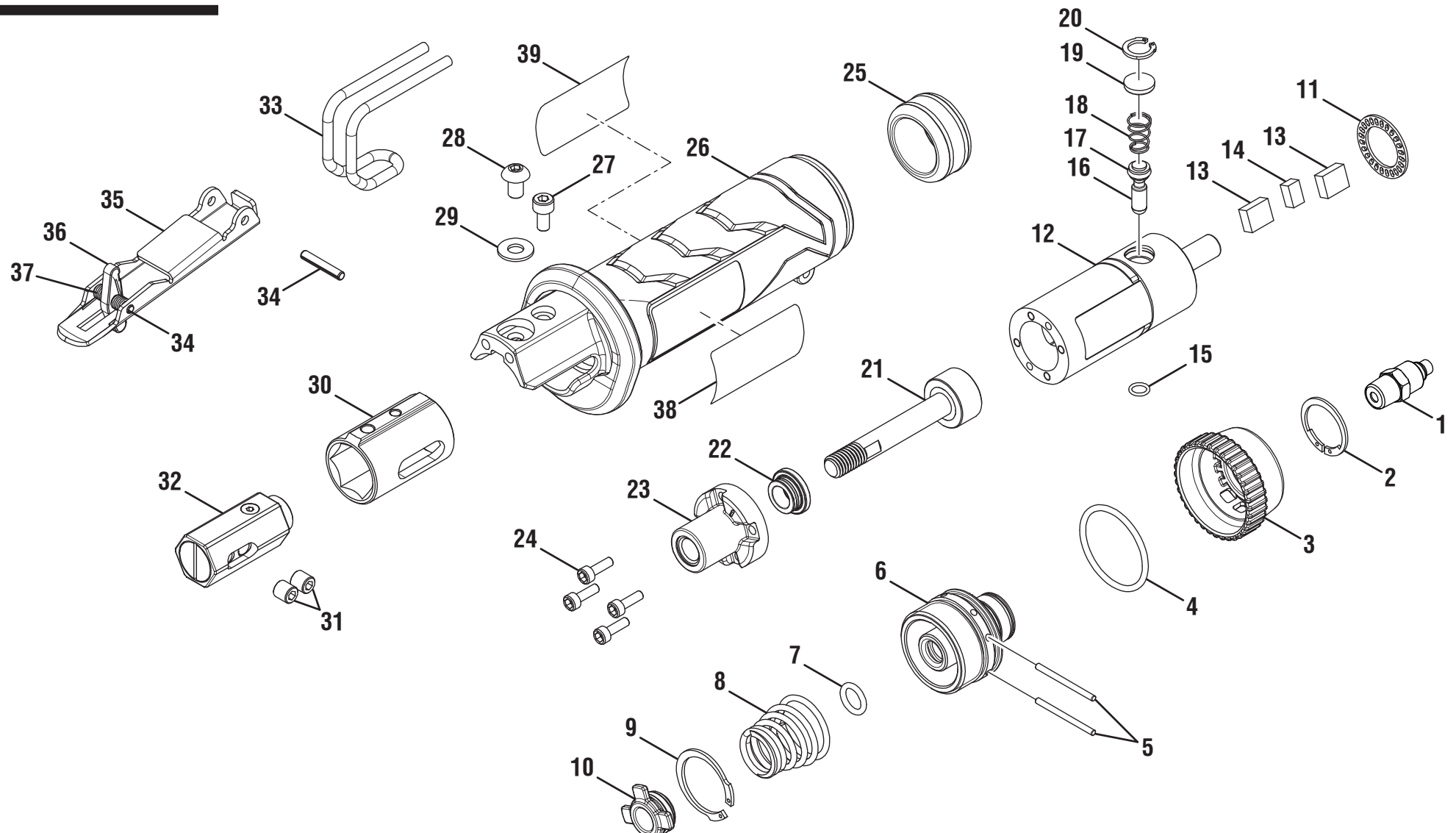


**RIDGID
R040SCA ROOFING CUTTER
REPAIR SHEET**

**RIDGID
R040SCA COUTEAU À BARDEAUX
FEUILLE DE RÉPARATION**

**RIDGID
R040SCA FRESA PARA TECHADO
LISTA DE PIEZAS DE REPUESTO**



⚠ DANGER: Do not use oxygen, combustible gases, or bottled gases as a power source for this tool. The tool will explode and cause death or serious injury.

⚠ DANGER : Ne pas utiliser de l'oxygène ou des gaz combustibles ou en bouteille pour alimenter l'outil. L'outil exploserait, causant des blessures graves ou mortelles.

⚠ PELIGRO: No utilice oxígeno, gases combustibles ni gases embotellados como fuente de energía para esta herramienta. La herramienta explotará y causará la muerte o lesiones serias.

⚠ WARNING: Disconnect the tool from the air supply before performing maintenance. Failure to do so could result in serious personal injury.

⚠ AVERTISSEMENT : Débrancher l'outil de la source d'air avant tout entretien. Ne pas prendre cette précaution peut entraîner des blessures graves.

⚠ ADVERTENCIA: Desconecte la herramienta del suministro de aire antes de efectuar tareas de mantenimiento. La inobservancia de esta advertencia puede causar lesiones serias.



R040SCA

| KEY | P/N | DESCRIPTION | QTY | KEY | P/N | DESCRIPTION | QTY |
|-----|--------------|---|-----|---------------------|--|--|-----|
| 1 | 079077020003 | Swivel Air Plug (1/4 in. NPT)..... | 1 | 24 | 079067001031 | Bolt (M3 x 10 mm, Hex. Soc. Hd.)..... | 4 |
| 2 | 079067001002 | External Retaining Ring (ISTW17)..... | 1 | 25 | 079067001032 | Feed Bumper (B)..... | 1 |
| 3 | 079077020001 | Deflector..... | 1 | 26 | 079067001033 | Tool Body Unit (Inc. Key Nos. 38-39)..... | 1 |
| 4 | 079067001004 | O-Ring..... | 1 | 27 | 079067001034 | Bolt (M4 x 8 mm, Hex. Soc. Hd.)..... | 1 |
| 5 | 079067001005 | Pin..... | 2 | 28 | 079067001035 | Bolt (M5 x 8 mm, Half Round Hd. Hex.)..... | 1 |
| 6 | 079067001006 | End Cap..... | 1 | 29 | 079067001036 | Washer (ID5.3 x OD12 x 1.2t)..... | 1 |
| 7 | 079067001007 | O-Ring..... | 1 | 30 | 079067001037 | Blade Holder Guide..... | 1 |
| 8 | 079067001008 | Anti-Vibration Spring..... | 1 | 31 | 079067001038 | Set Screw (M6 x 6 mm, Hex. Soc. Hd.)..... | 2 |
| 9 | 079067001009 | Internal Retaining Ring (IRTW24)..... | 1 | 32 | 079067001039 | Blade Clamp Assembly..... | 1 |
| 10 | 079067001010 | Spring Mount..... | 1 | 33 | 079067001041 | Shoe..... | 1 |
| 11 | 079067001011 | Muffler Cap..... | 1 | 34 | 079067001042 | Spring Pin..... | 2 |
| 12 | 079067001701 | Motor Assembly (Inc. Key Nos. 13-20)..... | 1 | 35 | 079067001043 | Trigger..... | 1 |
| 13 | 079067001013 | Muffler..... | 2 | 36 | 079067001044 | Lock Lever..... | 1 |
| 14 | 079067001014 | Muffler (A)..... | 1 | 37 | 079067001045 | Spring..... | 1 |
| 15 | 079067001015 | O-Ring..... | 1 | 38 | 079067001901 | Logo Label..... | 1 |
| 16 | 079067001016 | Valve Stem Unit..... | 1 | 39 | 079067001902 | Data and Warning Label..... | 1 |
| 17 | 079067001017 | O-Ring..... | 1 | Not Shown: | | | |
| 18 | 079067001018 | Valve Stem Spring..... | 1 | 079067001040 | Shingle Cutting Blade..... | 1 | |
| 19 | 079067001019 | Valve Seal..... | 1 | 079067001047 | Multi-Material Cutting Blade..... | 1 | |
| 20 | 079067001020 | Internal Retaining Ring (IRTW10)..... | 1 | 079067001702 | Overhaul Kit (Inc. Key Nos. 4, 7, 13-15, 17, 21-22, and 32)..... | 1 | |
| 21 | 079067001027 | Piston Shaft Unit..... | 1 | 079067001703 | Oil and Wrench Kit (Inc. Oil and 3 mm Hex Key)..... | 1 | |
| 22 | 079067001028 | Feed Bumper (A)..... | 1 | 988000709 | Operator's Manual..... | 1 | |
| 23 | 079067001029 | Feed Cap..... | 1 | 8-13-13 (Rev:04) | | | |

| CLÉ | RÉF. | DESCRIPTION | QTÉ | CLÉ | RÉF. | DESCRIPTION | QTÉ |
|-----|--------------|--|-----|-----------------------|--|--|-----|
| 1 | 079077020003 | Bouchon pivotant d'air (1/4 po NPT)..... | 1 | 24 | 079067001031 | Boulon (M3 x 10 mm, tête cre. hex.) | 4 |
| 2 | 079067001002 | Bague de retenue externe (ISTW17)..... | 1 | 25 | 079067001032 | Butoir d'alimentation (B)..... | 1 |
| 3 | 079077020001 | Deflecteur | 1 | 26 | 079067001033 | Corps de l'outil (inclut les pièces 38-39) | 1 |
| 4 | 079067001004 | Joint torique..... | 1 | 27 | 079067001034 | Boulon (M4 x 8 mm, tête cre. hex.) | 1 |
| 5 | 079067001005 | Broche | 2 | 28 | 079067001035 | Boulon (M5 x 8 mm, 6 pans, tête creuse bombée) | 1 |
| 6 | 079067001006 | Capuchons d'extrémité | 1 | 29 | 079067001036 | Rondelle (ID5.3 x OD12 x 1.2t) | 1 |
| 7 | 079067001007 | Joint torique..... | 1 | 30 | 079067001037 | Guide-lame de lame | 1 |
| 8 | 079067001008 | Ressort antivibrations..... | 1 | 31 | 079067001038 | Vis d'arrêt (M6 x 6 mm, tête cre. hex.)..... | 2 |
| 9 | 079067001009 | Bague de retenue interne (IRTW24)..... | 1 | 32 | 079067001039 | Ensemble de verrouillage de lame..... | 1 |
| 10 | 079067001010 | Montage du ressort | 1 | 33 | 079067001041 | Semelle | 1 |
| 11 | 079067001011 | Couvercle de silencieux..... | 1 | 34 | 079067001042 | Axe de ressort | 2 |
| 12 | 079067001701 | Ensemble du moteur (inclut les pièces 13-20) | 1 | 35 | 079067001043 | Gâchette | 1 |
| 13 | 079067001013 | Silencieux | 2 | 36 | 079067001044 | Levier de blocage | 1 |
| 14 | 079067001014 | Silencieux (A) | 1 | 37 | 079067001045 | Ressort | 1 |
| 15 | 079067001015 | Joint torique..... | 1 | 38 | 079067001901 | Étiquette de logo | 1 |
| 16 | 079067001016 | Unité de tige de la soupape | 1 | 39 | 079067001902 | Étiquette d'avertissement et de données..... | 1 |
| 17 | 079067001017 | Joint torique..... | 1 | Non illustré : | | | |
| 18 | 079067001018 | Ressort de tige de la soupape..... | 1 | 079067001040 | Lame de coupe de bardeaux..... | 1 | |
| 19 | 079067001019 | Joint de valve..... | 1 | 079067001047 | Lame pour coupe de matériau multiples..... | 1 | |
| 20 | 079067001020 | Bague de retenue interne (IRTW10)..... | 1 | 079067001702 | Kit de remise à neuf (inclut les pièces. 4, 7, 13-15, 17, 21-22, et 32) | 1 | |
| 21 | 079067001027 | Unité de axe de piston | 1 | 079067001703 | Ensemble huile et clé (inclut huile et 3 mm clé hexagonale) | 1 | |
| 22 | 079067001028 | Butoir d'alimentation (A) | 1 | 988000709 | Manuel d'utilisation..... | 1 | |
| 23 | 079067001029 | Capuchon d'alimentation | 1 | | | | |



R040SCA

| REF. | N/P | DESCRIPCIÓN | CANT | REF. | N/P | DESCRIPCIÓN | CANT |
|------|--------------|--|------|------|------------------------|---|------|
| 1 | 079077020003 | Tapón giratorio del aire (1/4 pulg. NPT)..... | 1 | 24 | 079067001031 | Perno (M3 x 10 mm, cab. de hue. hex.) | 4 |
| 2 | 079067001002 | Aro de retención externa (ISTW17)..... | 1 | 25 | 079067001032 | Tope alimentación (B) | 1 |
| 3 | 079077020001 | Deflector | 1 | 26 | 079067001033 | Armazón herramienta (incl. núm. de ref. 38-39) | 1 |
| 4 | 079067001004 | Junta tórica..... | 1 | 27 | 079067001034 | Perno (M4 x 8 mm, cab. de hue. hex.) | 1 |
| 5 | 079067001005 | Pasador | 2 | 28 | 079067001035 | Perno (M5 x 8 mm, cab. semirred. hex.) | 1 |
| 6 | 079067001006 | Tapa del extremo | 1 | 29 | 079067001036 | Arandela (ID5.3 x OD12 x 1.2t)..... | 1 |
| 7 | 079067001007 | Junta tórica..... | 1 | 30 | 079067001037 | Soporte de la guía de la hoja..... | 1 |
| 8 | 079067001008 | Resorte antivibración..... | 1 | 31 | 079067001038 | Tornillo fijador (M6 x 6 mm, cab. de hue. hex.) | 2 |
| 9 | 079067001009 | Aro de retención interna (IRTW24)..... | 1 | 32 | 079067001039 | Conjunto del mordaza para hoja | 1 |
| 10 | 079067001010 | Montaje del resorte..... | 1 | 33 | 079067001041 | Zapata | 1 |
| 11 | 079067001011 | Tapa del silenciador | 1 | 34 | 079067001042 | Pasador de resorte | 2 |
| 12 | 079067001701 | Conjunto del motor (incl. núm. de ref. 13-20)..... | 1 | 35 | 079067001043 | Gatillo | 1 |
| 13 | 079067001013 | Silenciador | 2 | 36 | 079067001044 | Palanca de fijación | 1 |
| 14 | 079067001014 | Silenciador (A)..... | 1 | 37 | 079067001045 | Resorte | 1 |
| 15 | 079067001015 | Junta tórica..... | 1 | 38 | 079067001901 | Etiqueta del logotipo | 1 |
| 16 | 079067001016 | Unidad de vástago de válvula | 1 | 39 | 079067001902 | Etiqueta de advertencia y de datos..... | 1 |
| 17 | 079067001017 | Junta tórica..... | 1 | | No se muestra : | | |
| 18 | 079067001018 | Resorte de vástago de válvula | 1 | | 079067001040 | Hoja de corte para tejas | 1 |
| 19 | 079067001019 | Sello de válvula..... | 1 | | 079067001047 | Para corte de material múltiple | 1 |
| 20 | 079067001020 | Aro de retención interna (IRTW10)..... | 1 | | 079067001702 | Juego de mantenimiento general (incl. núm. de ref. 4, 7, 13-15, 17, 21-22, y 32) | 1 |
| 21 | 079067001027 | Unidad de eje de pistón | 1 | | 079067001703 | Juego de aceite y llave (incl. aceite y 3 mm llave hexagonal) ... | 1 |
| 22 | 079067001028 | Tope alimentación (A) | 1 | | 988000709 | Manual del operador | 1 |
| 23 | 079067001029 | Tapa de alimentación..... | 1 | | | | |